

County Profile Contact (919) 715-6374

Commerce Economic Development Contact (919) 733-4977

## Demographics

### Population & Growth

	Population	Annual Growth Rate
2014 Total Population	74,413	0.2%
2009 Total Population	73,569	0.4%
2000 Total Population	71,219	
July 2008 Certified Population Estimate	73,388	
July 2008 Certified Population Growth	2,179	
July 2008 Certified Net Migration	1,191	

### Urban/Rural Representation

	Population	Urban/Rural Percent
2000 Total Population: Urban - inside Urbanized Area	0	0.0%
2000 Total Population: Urban - inside Urbanized Clusters	21,498	30.2%
2000 Total Population: Rural - Farm	1,635	2.3%
2000 Total Population: Rural - Nonfarm	48,086	67.5%

### Estimated Population by Age

	Population	Pop by Age, % Est.
2014 Median Age	42	
2009 Median Age	41	
2000 Median Age	38	
2009 Total Pop 0-19	18,576	25.2%
2009 Total Pop 20-29	7,853	10.7%
2009 Total Pop 30-39	9,792	13.3%
2009 Total Pop 40-49	10,987	14.9%
2009 Total Pop 50-59	10,196	13.9%
2009 Total Pop 60+	16,165	22.0%

## Working Commuters, 2000 Census

### Workers, Travel Time

Avg Travel Time, Not at Home	26
Workers Not Working at Home	32,636
Travel Time to Work: < 5 minutes	1,244
Travel Time to Work: 5-9 minutes	3,930
Travel Time to Work: 10-14 minutes	5,968
Travel Time to Work: 15-19 minutes	5,304
Travel Time to Work: 20-24 minutes	4,327
Travel Time to Work: 25-29 minutes	1,633
Travel Time to Work: 30-34 minutes	3,745
Travel Time to Work: 35-39 minutes	672
Travel Time to Work: 40-44 minutes	850
Travel Time to Work: 45-59 minutes	2,567
Travel Time to Work: 60-89 minutes	1,176
Travel Time to Work: 90+ minutes	1,220

### Workers, By Transportation

Worker Mode, Base	33,458
Work at Home	822
Drove Car/Truck/Van Alone	26,234
Carpooled Car/Truck/Van	5,511
Bus/Trolley Bus	19
Streetcar/Trolley Car	0
Subway/Elevated	0
Railroad	0
Ferryboat	0
Taxicab	33
Motorcycle	21
Bicycle	2
Walked	465
Other Means	351

## Travel to Work

	Commuters	Percent by Residence
Worked in State/County of Residence	24,821	74.2%
Worked in State/Outside County of Residence	7,752	23.2%
Worked Outside State of Residence	885	2.6%

## Education

		Pop Age 25+, %
2008-09 Kindergarten-12th Enrollment	11,846	
2009 Average SAT score (2400 scale)	1,476	
2009 Percent of Graduates taking SAT	4E3%	
2007-08 Higher Education Completions	418	
2007-08 Higher Education Total Enrollment	4,362	
2009 Proj Education Attainment - At Least High School Graduate	36,702	71.6%
2009 Proj Education Attainment - At Least Bachelor`s Degree	6,868	13.4%

## Housing

		Growth / Appreciation Est
2014 Total Housing	33,326	1.1%
2009 Total Housing	32,977	
2013 Median Value of Owner Occupied Housing	\$117,222	6.4%
2008 Median Value of Owner Occupied Housing	\$110,176	39.8%
2009 Owner Occupied Housing	22,264	
2009 Renter Occupied Housing	7,014	
2009 Total Households	29,278	
2000 Median Year Housing Structure Built	1973	

## Income

		Growth Est or Total %/ Percent
2014 Median Family Income	\$50,764	5.1%
2009 Median Family Income	\$48,302	24.3%
2000 Median Family Income	\$38,860	
2014 Median Household Income	\$42,164	2.3%
2009 Median Household Income	\$41,217	24.1%
2000 Median Household Income	\$33,224	
2009 Median Disposable Income	\$32,906	
2009-2014 Per Capita Income: Annual Compound Growth Rate %		0.6%
2014 Per Capita Income	\$21,034	2.9%
2009 Per Capita Income	\$20,433	15.3%
2000 Per Capita Income	\$17,722	
2000 Total Pop with Income Below Poverty Level	8,685	
2000 Percent of Pop with Income Below Poverty Level		12.4%

## Employment / Unemployment

	Year to Date	2008 Annual
2009Q3 Employment	30,256	31,234
2009Q3 Unemployment	4,049	2,751
2009Q3 Unemployment Rate	11.8%	8.1%
2009Q3 Announced Job Creation	45	90
2009Q3 Total Announced Investments (\$mil)	\$5	\$141
Dec2009 Lost Jobs, Closings & Layoffs	945	171
Dec2009 Establishment Events, Closings & Layoffs	12	5

## Employment / Wages by Industry

	2009 2nd Qtr Employment	2008 Annual Employment	2009 2nd Qtr Avg Weekly Wage	2008 Avg Weekly Wage
Total All Industries	28,272	30,220	\$562	\$566
Total Government	4,456	4,411	\$655	\$661

Total Private Industry	22,271	24,581	\$529	\$540
Agriculture Forestry	0	0	.	.
Fishing & Hunting				
Mining	0	0	.	.
Utilities	93	90	\$939	\$1,028
Construction	2,852	3,233	\$767	\$790
Manufacturing	4,565	5,816	\$529	\$569
Wholesale Trade	892	1,064	\$808	\$753
Retail Trade	3,713	3,860	\$434	\$417
Transportation and Warehousing	1,333	1,441	\$633	\$638
Information	264	288	\$737	\$720
Finance and Insurance	613	611	\$701	\$757
Real Estate and Rental and Leasing	196	211	\$403	\$440
Professional and Technical Services	0	0	.	.
Management of Companies, Enterprises	0	0	.	.
Administrative and Waste Services	1,062	1,350	\$352	\$368
Educational Services	2,015	2,004	\$627	\$630
Health Care and Social Assistance	4,098	3,967	\$637	\$639
Arts, Entertainment and Recreation	289	273	\$259	\$274
Accommodation and Food Services	2,382	2,404	\$225	\$215
Other Services Ex. Public Admin	805	887	\$461	\$436
Public Administration	1,522	1,446	\$585	\$593
Unclassified	33	47	\$403	\$515

## Commercial/Retail/Industrial

### Local Businesses

2010 Available Industrial Buildings	26
2008 Establishments: Total Private Industry	1,765
2008 Establishments: Manufacturing	117

### Local Retail Business

2009 Total Retail Sales (With Food/Drink) (\$mil)	\$683.5
2009 Total Retail Businesses (With Food/Drink)	749
2009 Avg Sales/Business Total (with Food/Drink)	\$912,572

## Quality of Life

### Taxes

FY2009-10 Property Tax Rate per \$100 Value	\$0.5820
FY2008-09 Annual Taxable Retail Sales (\$mil)	\$628.8
2010 Tier designation	1

### Childcare

Sep2009 Licensed Child Care Facilities	71
Sep2009 Licensed Child Care Enrollment	1,676

### Weather

Annual Rainfall	41
Annual Snowfall	11
Average Annual Temperature	59
Average Annual High Temperature	70
Average Annual Low Temperature	46

### Healthcare Providers

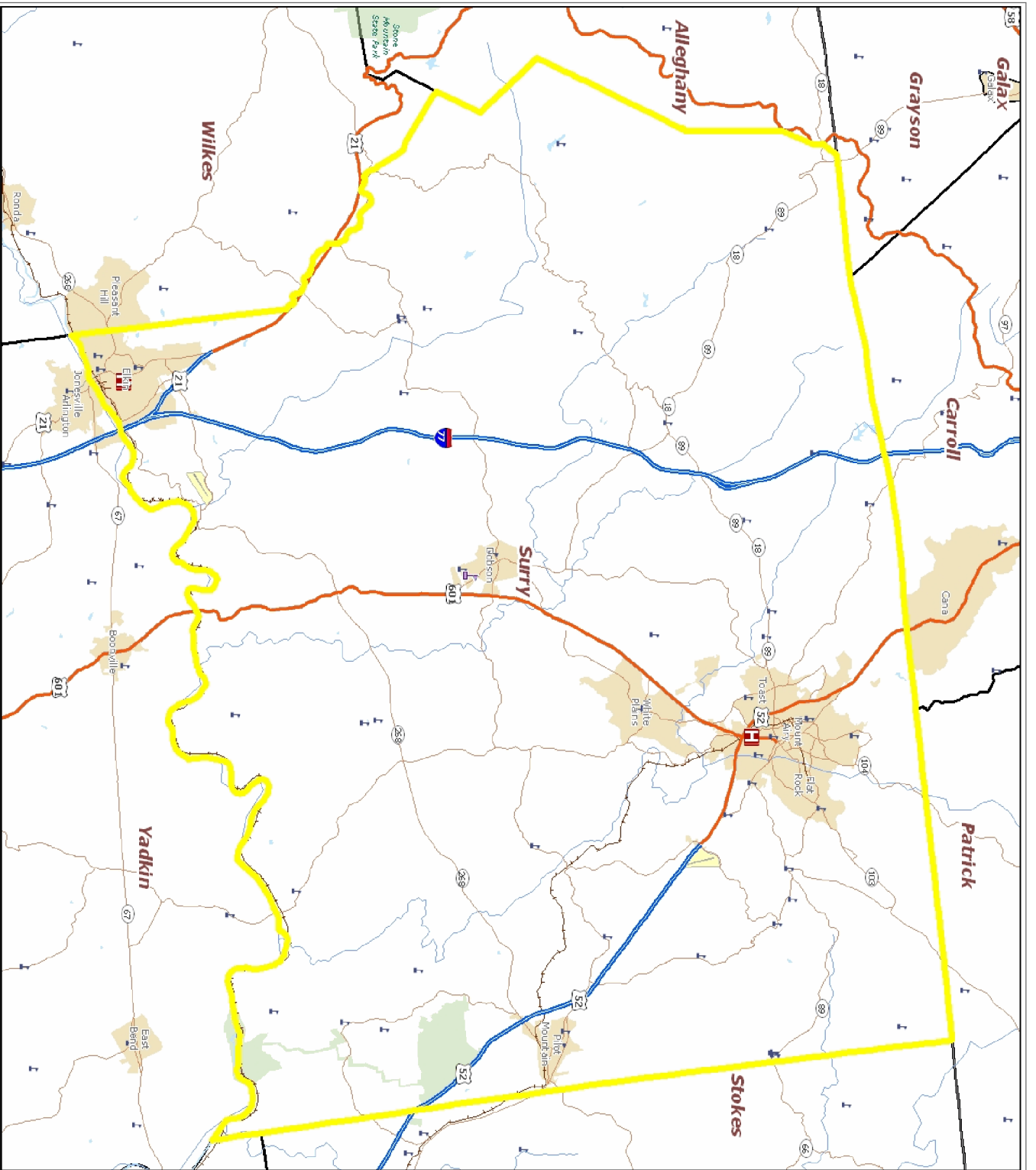
2008 Number of Physicians	112
2008 Physicians per 10,000 population	15.3
2008 RNs per 10,000 population	84.9
2008 Dentists per 10,000 population	3.3
2008 Pharmacists per 10,000 population	8.3

### Sources:

ESRI for demographics, working population, educational attainment, housing, income, crime, weather, and retail data. <http://www.esri.com>  
 NC Dept. of Education and various state education departments for SAT data by county system. <http://www.ncpublicschools.org>  
 US Dept. of Education, National Center for Education Statistics for higher education data. <http://nces.ed.gov/ipeds/>  
 NC Commerce for announced new jobs and investment, NC tiers, and number of industrial buildings. <http://www.nccommerce.com/en>  
 NC Employment Security Commission for lost jobs and affected establishments data. <http://www.ncesc.com>  
 NC Dept. of Health & Human Services for childcare data. <http://www.ncdhhs.gov/>  
 UNC Sheps Center for healthcare provider statistics. <http://www.shepscenter.unc.edu/>  
 US Bureau of Labor Statistics for employment and unemployment, wages and establishments by industry. <http://www.bls.gov>

### Notes:

Data are the latest available at the date the profile was prepared. SAT scores use the new scoring system including a writing test for a perfect score of 2400 and represent county systems. ESRI 2009/2014 data are projections. Some data may be available only for North Carolina. For further details or questions, please check the Data Sources Guide at [https://edis.commerce.state.nc.us/docs/bibliography/Data\\_Sources\\_Guide.pdf](https://edis.commerce.state.nc.us/docs/bibliography/Data_Sources_Guide.pdf).



Prepared by North Carolina Department of Commerce,  
 Division of Policy, Research & Strategic Planning, February 2008

**Legend**

- Hospital
- Public University
- Private University
- NC Community Colleges
- School
- Limited Access
- Highway
- Major Road
- Local Road
- Minor Road
- Other Road
- Ramp
- Ferry
- Pedestrian Way
- Railroads (Local)
- Airport Area
- Stream
- Intermittent Stream
- Canal
- Dam
- National Park or Forest
- State Park or Forest
- Local Park or Recreation Area
- Municipal Boundaries

