



**SURRY COUNTY EDP**

# **EMPLOYER PACKET**

**The Future Starts Now**

---

**484 Howard Woltz Jr. Way, Mount Airy, NC 27030 | PO BOX 7128  
blake@surryedp.com | 336-269-3828 | [www.surryedp.com](http://www.surryedp.com)**

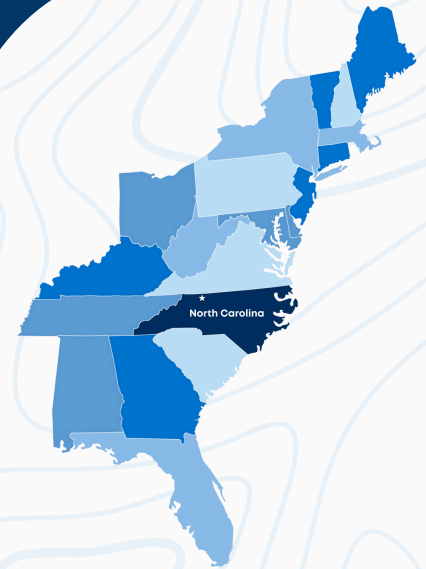


# Table of Contents

|   |          |
|---|----------|
| <b>I. Welcome to Surry County</b>             | <b>3</b> |
| <b>II. Workforce Development</b>              | <b>4</b> |
| <b>III. Talent Attraction &amp; Retention</b> | <b>6</b> |
| <b>IV. Incentives &amp; Business Support</b>  | <b>7</b> |
| <b>V. Community &amp; Quality of Life</b>     | <b>8</b> |
| <b>VI. Resources &amp; Connections</b>        | <b>9</b> |



# Welcome to Surry County



## Community Profile

Surry County is where business opportunity meets quality of life. With a strong industrial base, skilled workforce, and exceptional community support, our county is an ideal place to start, grow, or expand your business. This packet connects you to the key resources, partners, and programs that make success possible here.

## Location & Access

- Situated in the northwestern Piedmont region of North Carolina, within an hour of Winston-Salem and less than two hours from Charlotte and Greensboro.
- Immediate access to Interstate 77, Interstate 74, and Highways 52, 601, and 89 connects businesses to major markets in the Southeast.
- The Mount Airy/Surry County Airport (MWK) supports corporate and freight travel with a 5,500-foot runway and business-friendly services.

## Population & Workforce

- Population: ~72,000 residents
- Regional Labor Shed: Over 350,000 workers within a 45-minute drive
- Median Age: 42 years
- Labor Force Participation: 59.5%
- Diverse talent pool with strong representation in advanced manufacturing, logistics, healthcare, education, and creative trades.

## Quality of Life

- Low cost of living and affordable housing.
- Top-20 ranked school systems in North Carolina.
- Scenic outdoor amenities in the Blue Ridge foothills, including hiking, cycling, and water recreation.
- Access to the Yadkin Valley Wine Region, local arts, and vibrant downtowns in Mount Airy, Dobson, and Elkin.

# Workforce Development



## Building a Skilled Talent Pipeline

Surry County offers a collaborative education-to-career ecosystem that connects employers with qualified workers.

### Key Partners



#### Surry Yadkin Works

A regional pre-apprenticeship program linking high school students with local employers through paid work experiences. Build your future workforce by offering internships and apprenticeships. Students gain skills tailored to your industry needs.



#### Surry Community College

Provides customized training, continuing education, and certificate programs in manufacturing, healthcare, IT, and more. SCC's Customized Training Program offers no-cost training for eligible new or expanding industries.



#### Local School Systems

Career and Technical Education (CTE) programs prepare students for in-demand local careers, creating a steady talent pipeline from high school to industry. With 3 school systems ranked within the top 20 in the state.

# Workforce Development



Surry County is committed to supporting employers through strong workforce development partnerships that help businesses recruit, train, and retain high-quality talent. Our region benefits from a coordinated network of local and statewide resources designed to meet employer needs at every stage—from talent attraction to employee training and upskilling.

## **NCWorks Career Center | [Learn More](#)**

- Offers comprehensive hiring support—from job postings and candidate screening to hosting hiring events and job fairs.
  - Employers can list openings for free and receive assistance finding qualified candidates.
  - NCWorks staff can also help coordinate training and apprenticeship placements.

## **WorkForce Unlimited Staffing Resources | [Learn More](#)**

- A trusted staffing partner based in Mount Airy, WorkForce Unlimited specializes in connecting employers with qualified temporary, seasonal, and part-time workers.
  - Expertise in manufacturing, logistics, clerical, and professional placements.
  - Provides flexible staffing solutions to meet short-term or project-based needs.

## **Surry County Recovery to Work Program | [Learn More](#)**

- The Recovery to Work program helps connect employers with job seekers who are actively in recovery from substance use disorder.
  - This program provides a pipeline of motivated individuals who are supported by wraparound services such as coaching, transportation assistance, and continued treatment support.
  - Employers benefit from dedicated employees, structured support systems, and guidance for implementing second-chance hiring practices that strengthen the local workforce and promote community resilience.

**DOWNLOAD OUR WORKPLACE & TALENT SURVEY**



# Talent Attraction & Retention



## Helping Employers Attract, Engage, and Retain Top Talent

Surry County is committed to elevating the way people live, work, and build their futures. Through strategic partnerships, innovative marketing, and community-forward initiatives, we provide employers with the tools needed to recruit great people—and help them stay.

### Everyday | Elevated | Learn More

Our talent attraction hub showcases Surry County as a place where quality of life and meaningful careers come together, highlighting:

- Career opportunities across high-growth industries
- Community stories and lifestyle highlights
- Relocation resources for individuals and families
- Local schooling, housing, and recreation
- Why Surry County is the ideal place to live, work, and thrive

### Livability Media: Surry County | [Learn More](#)

Surry County partners with Livability Media to amplify our region's story on a national scale. We provide:

- Professionally written feature articles highlighting local industries, leaders, and community strengths
- A high-quality digital and print Livability Magazine used in talent recruitment, and employer outreach
- Broad digital distribution placing Surry County in front of relocation-minded professionals nationwide

### Foothills Young Professionals | [Learn More](#)

A regional networking organization connecting emerging leaders and young professionals to community and career opportunities—helping local employers engage the next generation of talent.

### Living & Working in Surry Packet | [Download the Packet](#)

This customizable packet helps employers tell a cohesive story about why Surry County is a great place to call home.



# Incentives & Business Support



## Learn More About Our Expansion Success Stories | Visit [www.surryedp.com](http://www.surryedp.com)

Discover how our incentive programs have helped businesses grow and thrive across Surry County. Visit our News page to explore examples of past projects and see how your business could benefit.

### Funding, Grants, and Growth Opportunities

Surry County and the State of North Carolina offer competitive incentives and programs to help employers grow, invest, and thrive locally. The Surry County Economic Development Partnership assists both new and existing companies in understanding and applying for these opportunities, including those offered at state and local levels.

#### State Incentives

State-level incentives (for qualifying businesses, especially those making new taxable investments, creating jobs, or locating/expanding operations in the county):

- One North Carolina Fund
- Job Development Investment Grant
- Infrastructure Grants
- Building Reuse Grant
- Community Development Block Grants
- Industrial Revenue Bonds

#### Local Incentives

- Publicly-owned industrial parks
- Property tax incentives
- Infrastructure assistance

### Want to Learn More? | [blake@surryedp.com](mailto:blake@surryedp.com)

Reach out to Blake Moyer for additional information and support for job codes, career pathways, or accessing detailed job market reports.

#### Small Business Center

The SBC at Surry Community College is dedicated to supporting entrepreneurship and small business growth

Services include:

- Free one-on-one business counseling and startup guidance.
- Workshops and seminars on marketing, finance, and business planning.
- Resource connections for licensing, funding, and business registration.
- Access to networking events and mentorship opportunities.

#### Workforce Training & Support

Adding new machinery? Need to train staff on a new process?

Through local training providers like Surry Community College and regional workforce boards, companies can access customized training grants and employee-development programs.

[VIEW THE REPORT](#)

# Community & Quality of Life



## Where Opportunity Meets Livability

Surry County offers the perfect balance between economic opportunity and quality of life. Businesses thrive here not only because of our strong workforce and infrastructure—but also because Surry County provides a welcoming, connected, and inspiring place to live.

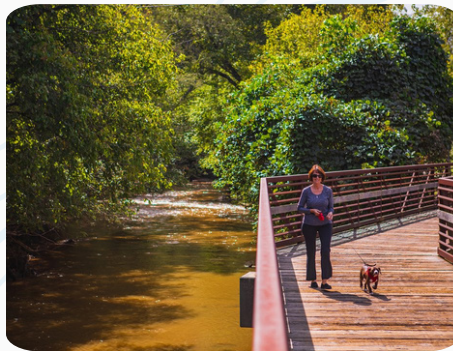


### Location & Accessibility

Nestled in the foothills of the Blue Ridge Mountains, Surry County provides small-town charm with big-city access.

Located along I-77, I-74, and U.S. Highways 52 and 601, within easy reach of Winston-Salem, Greensboro, and Charlotte, all under 90 minutes away.

The Mount Airy/Surry County Airport (MWK) supports business and charter flights, with major airports nearby in Greensboro (GSO), Charlotte (CLT) and Raleigh (RDU)



### Thriving Communities

Surry County together, forms a vibrant, innovative region full of opportunity.

Dobson – County seat and hub for education and industry.

Elkin – Center of business growth in the Yadkin Valley Wine Region.

Mount Airy – Leader in manufacturing and entrepreneurship.

Pilot Mountain – Supporting expanding economic opportunities.



### Cost of Living & Lifestyle

Surry County combines the advantages of a strong economy with affordability and comfort.

Cost of living is 21.3% lower than the national average.

Short commutes, community events, and friendly neighborhoods create a strong sense of belonging.

Excellent healthcare is available locally through regional providers like Northern Regional Hospital & Hugh Chatham Health.



# Resources & Connections



## **Surry County Economic Development Partnership (SCEDP) | Blake Moyer**

First point of contact for site selection, incentives, and business guidance.

(336) 269-3828 | [www.surryedp.com](http://www.surryedp.com) | [blake@surryedp.com](mailto:blake@surryedp.com)

## **Surry Community College Small Business Center | Lesa Hensley**

Free counseling, workshops, and startup resources for small businesses and entrepreneurs.

(336) 386-3369 | [www.surry.edu/sbc](http://www.surry.edu/sbc) | [hensleyla@surry.edu](mailto:hensleyla@surry.edu)

## **Surry-Yadkin Works | Crystal Folger-Hawks**

Pre-apprenticeship program connecting students with local employers.

(336) 386-3683 | [www.surryyadkinworks.org](http://www.surryyadkinworks.org) | [folger-hawksc@surry.edu](mailto:folger-hawksc@surry.edu)

## **Surry Community College Workforce Training | Corey Easter**

Customized training programs for new or expanding businesses.

(336) 386-3219 | [www.surry.edu](http://www.surry.edu) | [eastertc@surry.edu](mailto:eastertc@surry.edu)

## **NCWorks Career Center | Lisa Lamb**

Job postings, candidate screening, recruitment events, and training support.

(336) 415-6120 | [www.ncworks.gov](http://www.ncworks.gov) | [SurryCounty@NCWorks.gov](mailto:SurryCounty@NCWorks.gov)

## **WorkForce Unlimited | Mike Brannock**

Staffing solutions for temporary, seasonal, and part-time positions.

(336) 789-8220 | [www.workforceunlimited.com](http://www.workforceunlimited.com) | [mountairybranchstaff@wfunlimited.com](mailto:mountairybranchstaff@wfunlimited.com)

## **Foothills Young Professionals | Weatherly A. Reeves**

Networking and professional development for emerging leaders.

(336) 977-7705 | [www.foothillsyp.com](http://www.foothillsyp.com) | [weatherly@surryedp.com](mailto:weatherly@surryedp.com)

## **Surry County Recovery To Work | Emily Venable-Schiffe**

Helping individuals develop valuable skills or trades for employment, work, and job retention.

(336)-374-9145 | [www.surrycountycares.com](http://www.surrycountycares.com) | [venable-schiffe@co.surry.nc.us](mailto:venable-schiffe@co.surry.nc.us)

**Surry County Incentives Overview** – [www.surryedp.com/surry-county-incentives](http://www.surryedp.com/surry-county-incentives)

**North Carolina Department of Commerce** – [www.nccommerce.com](http://www.nccommerce.com)

# Resources & Connections



**Elkin High School Career Development Coordinator | Danna Carpenter**

Elkin City Schools

(336) 835-3858 | [www.elkincityschools.org](http://www.elkincityschools.org) | [carpenterd@elkin.k12.nc.us](mailto:carpenterd@elkin.k12.nc.us)

**Mount Middle & High School CTE Director | Garrett Howlett**

Mount Airy City Schools

(336) 789-5147 | [www.mtairy.k12.nc.us](http://www.mtairy.k12.nc.us) | [ghowlett@mtair.k12.nc.us](mailto:ghowlett@mtair.k12.nc.us)

**East Surry High School CT Development Coordinator | Misty Bruner**

Surry County Schools

336-368-2251 | [www.surry.k12.nc.us/o/esh](http://www.surry.k12.nc.us/o/esh) | [brunerm@surry.k12.nc.us](mailto:brunerm@surry.k12.nc.us)

**North Surry High School Career Development Coordinator | Willie Hodges**

Surry County Schools

336-789-5055 | [www.surry.k12.nc.us/o/nsh](http://www.surry.k12.nc.us/o/nsh) | [hodgesw@surry.k12.nc.us](mailto:hodgesw@surry.k12.nc.us)

**Surry Central High School & Surry Early College High School CTE Career Development Coordinator | Sharia Templeton**

Surry County Schools

(336) 386-8842 | [www.surry.k12.nc.us/o/sch](http://www.surry.k12.nc.us/o/sch) | [templetons@surry.k12.nc.us](mailto:templetons@surry.k12.nc.us)





# Connect with Us for Further Inquiries!

---

484 Howard Woltz Jr. Way, Mount Airy, NC 27030 | PO BOX 7128  
[blake@surryedp.com](mailto:blake@surryedp.com) | 336-269-3828 | [www.surryedp.com](http://www.surryedp.com)